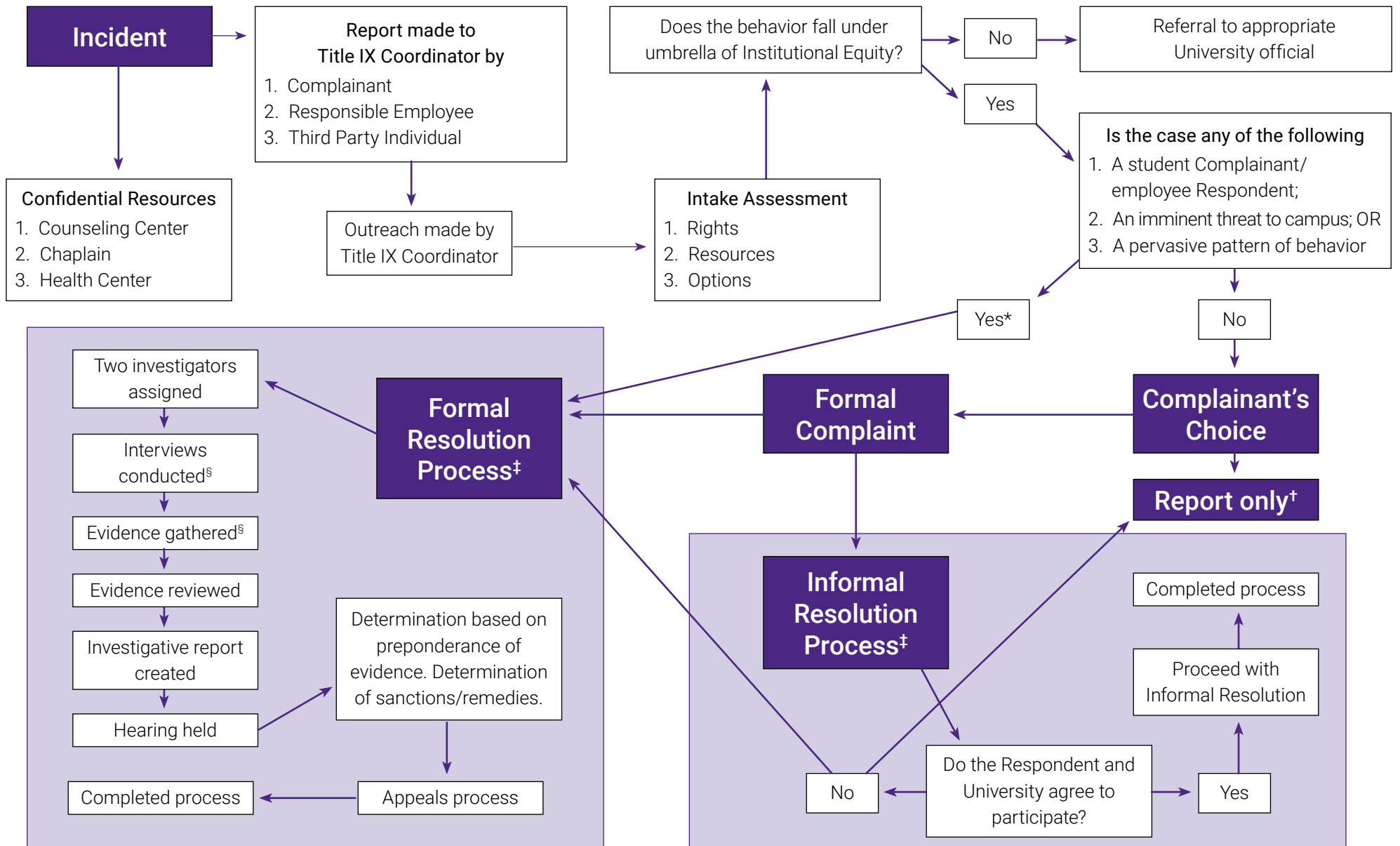


# TITLE IX FLOW CHART

Supportive measures are available at all stages for all parties.



\* A formal complaint is filed by the Title IX Coordinator for a Formal Resolution process.  
 † At any time, a Complainant can choose to file a Formal Complaint, even if they originally wished to Report Only.

‡ Until a process is complete, a Complainant can choose to move an Informal Resolution into the Formal Resolution process; likewise, if the Respondent and University agree, a case can move from a Formal Resolution into the Informal Resolution process.

§ At evidence review, a party may request that Investigators conduct additional interviews or gather additional evidence. The Investigators determine whether this is appropriate or not.