

New Residence Hall is a coed residence hall that can house up to 293 students. The hall desk is open two hours every night, and there is a Resident Assistant (RA) available for each floor. A full-time professional Residential Coordinator (RC) lives in New Hall and manages all staff and the daily operations of the building. Residential staff provide support to residents, assist with questions, provide resources essential to the community, and help establish an environment that supports the academic and social needs of students.

Get Involved in Your Residential Community!

The Resident Students Association

(RSA) is the student organization that supplements hall programming and helps provide upgrades to residential buildings.

They advocate for students, recognize the work of involved students, and encourage involvement at regional and international leadership conferences. Whether you are looking for a leadership role on campus, have an interest in planning events, or want to meet new people, RSA would be thrilled to have you. RSA has three standing committees to help boost your residential experience:

- **The Programming Committee** puts on fun and memorable events open to everyone in the building.
- **The Improvements Committee** focuses on community enhancements.
- **The Marketing Committee** creates unique ways to inform students about all that is happening.

Meetings are open to all residents and will start up shortly after the beginning of the school year. If you have questions about hall committees, contact your RC. Questions about RSA can be directed to rsa@evansville.edu.

Mailing and Building Address

Student's Name _____
1761 E Walnut Street
Room # _____
Evansville, IN 47714

Package Address

Student's Name _____
New Hall, Room # _____
1 South Frederick Street
Evansville, IN 47714

Quick Reference - Specific to New Hall

Living Together Getting along with the people you live with will be key to a satisfying living experience. All New Hall residents will participate in the Living Together Program with their roommates and pod mates. Be ready to discuss your living preferences and expectations!

How to get your Bed Lofted

Lofting is a great option – it provides a lot more floor space so that you can bring a more personal touch to your space. If you have a bed that is lofted, feel free to get a **loveseat** or a futon. These work really well when you have friends over. They provide a great place to sit and you don't have to mess up your bed.

All lofts in New Hall are assembled and disassembled professionally. This is done by the same people who provide MicroFridge rentals for our campus. They will come before school starts to assemble your loft for you.

The total fee for lofting is \$120 total, \$60 for install and \$60 for disassembly. This hassle-free service is provided exclusively for New Hall Students.

Requests for a lofted bed can be made by going through the same company that provides students with MicroFridge Rentals. Order your loft at MyMicroFridge.com!

Please be sure to provide the company with your full room information from eRezLife including what side your bed is on. To take a peek at your room configuration click [here](#).

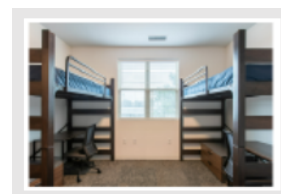
Clearance under a loft is approximately 48.5"

The height from floor to the top of the mattress is approximately 53"

Lofting requests need to be submitted **no later than 4 PM on Sunday, July 27**. *Requests after the deadline can be scheduled for September at a higher fee of \$180.*

There is a \$20 discount for Loft and MicroFridge rentals selected as a bundle on the site.

If you have any questions, the vendor can be reached at 1-800-525-7307.



Kitchenettes

Kitchenettes are light duty food storage/prep spaces equipped with cabinets, counters, a sink, and a full-size refrigerator. They are not meant for significant cooking and do not come with ovens, ranges, or ventilation for cooking. Podmates can bring a microwave that can be shared for the kitchenette counter. You can bring a small personal fridge and microwave for your room, but space may be an issue.

Necessities and Cleaning Stuff to Bring

So while we will prep your living spaces before you get here, you will be responsible for ongoing clean-up of your pod. Here are a few things you may want to consider bringing:

- Broom/dust mop/duster
- Bathroom cleaner
- Small vacuum
- Toilet bowl cleaner
- Hand soap/dish soap
- Plunger
- Sponges/cleaning wipes
- Other general cleaning supplies

Talk with your podmates about:

- Getting a shower curtain that everyone likes!
- Purchasing supplies of TP: Housekeeping provides you with your first roll of toilet paper, but you will need to supply this yourself the rest of the year!



Check-In and Emergency Info

When you check in at your appointed time at your residence hall, staff will provide you with your room key and other materials. When you first enter your room, be sure to review and sign your Room Condition Report on eRezLife.

You will also fill out or update your online Emergency Info. Be sure to have your student ID#, two emergency contacts, insurance card, and allergy and health information for this document

Things NOT to bring

- Multi-plugs (surge protector strips are OK)
- Duct tape
- Contact paper or wall decals
- Air fryers, sandwich grills, or other cooking appliances with exposed heating elements
- Halogen lamps
- Candles or candle warmers
- Pets (fish, service animals, and approved emotional support animals are allowed)
- Alcohol, illegal drugs, or tobacco
- Firearms, swords, or other weapons

All Things Tech

- Each room is set up for wired internet access, and the entire building has wifi.
- There are two common area TVs available for streaming your favorite apps in the main lobby area.
- Study/social rooms are available on the second, third, and fourth floors. These rooms are equipped with a streaming TV, comfortable seating, conference table, glass dry-erase boards, and a PC computer and printer.

TVs

You can stream content (with a smart TV, Roku, Firestick, etc.) and get a few local stations with a digital antennae. Talk with your podmates about having a TV in the living room.

Ace Cinema and Streaming

Check out the [free movie channel](#) on your laptop brought to you by RSA! To set up your streaming device or game console, start a chat with [OTIS!](#) Click "Ask a question" and type: Smartnet. Then proceed with your request.

Keys and Card Access

In New Hall, your ID is also a proximity key to access entrances, stairwells, the elevator, and your pod. You will be issued a physical key for your bed-room. Replacement cards can be obtained from Public Safety for \$15. Replacement keys are \$40.

Hall Amenities

- Large lobby area with two comfortable seating areas equipped with large screen streaming TVs.
- Adjacent to the lobby is a common kitchen for resident use, a laundry room, recycling / trash room, and the hall mail room.
- Study/social lounges with a computer and dry erase project boards on second, third, and fourth floors. Building printer access.
- The building is equipped with an elevator.
- Courtyard social space includes a grilling area and outside seating.

Need room measurements? Click [here](#).

Quick Guidelines for Arranging Your Room

- The walls in New Hall are constructed with drywall and painted with satin paint. Special considerations must be made when hanging decorative items on these walls. [Follow directions specifically posted for New Hall](#).
- Nothing should be hung from the ceilings. The plaster damages easily.
- Be careful not to damage walls, ceilings, or floors when moving furniture or equipment.
- It is a violation of the fire code to tamper with or hang anything from the sprinklers or pipes.
- Don't block AC/heating vents or window exits.
- Rugs are a nice addition - they can bring some coziness and personality into your room without much effort.
- Window blinds are included, but curtains on the windows can add character to the room and block more light at night if you face a streetlight. The easiest way to hang them is to use two large 3M Command hooks and a lightweight curtain rod.
- Be creative! Make your space your own — it's your home, so we want you to feel welcome in it!
- If you're worried about a decoration, just ask an RA! We'll be around a few weeks into the semester to do Health and Safety Inspections, so we can let you know whether or not something is a violation of policy.

At check-in, all students will fill out and sign an online Room Condition Report. Room damages are recorded on this form, and it is updated at checkout. New damages are billed to residents.

Trash and Recycling in New Residence Hall

Be sure to bring a trash can and recycling container for your room. There is a trash and recycling area on the first floor.

Acceptable Recycling Items EVERYTHING MUST BE EMPTY, DRY, and CLEAN.

- PETE #1 and HDPE #2 plastics (flattened, lids removed)
- Mixed paper: printer paper, brown paper bags, junk mail/envelopes, thin magazines
- Magazines
- Newspaper
- Aluminum cans
- Flattened cardboard

Batteries, light bulbs, and ink cartridges can be recycled in the hall office.

Unacceptable Items

- Plastic bags
- Aluminum foil
- Pizza boxes
- Cardboard with food residue
- Glass
- Soiled/wet paper, wax paper, napkins/towels, food packaging, wrapping paper, tissues, paper plates

Social Media

Residence Life

 @UEResLife  UEResLife  @residencelife1

RSA

 @UE_RSA  UERSA

Check the [Residence Life section](#) of the Student Handbook for more details about all our policies and processes.

Note: Any new damage at the end of the school year is the responsibility of the student and will be billed appropriately.