

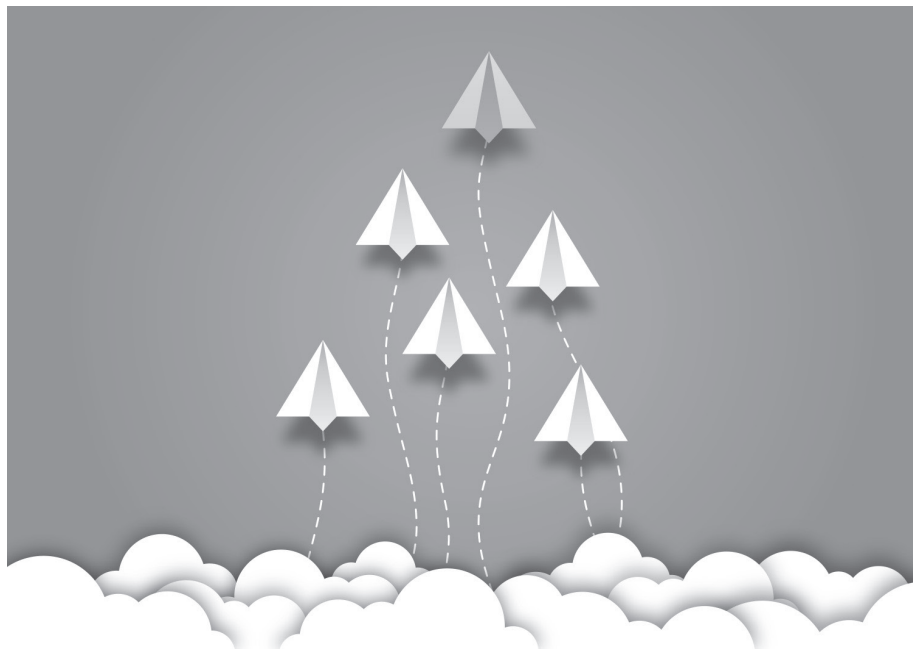


University
of Evansville

WELCOME '25
Week

AUGUST 16 - 19, 2025

CHANGING LIVES.
CHANGING THE WORLD.



ORIENTATION LEADERS

Abby Briggs	Hunter Sievers
Abijah Mersyl Dalion	John Brown
Ailyn Estrella Soto	Julia Morando
Antonio Cortes Roman	Lauren Bradley
Arturo Quepons	Luis Gonzalez
Arwyn Horstman	Mady Koontz
Audrey Blanner	Marilyn Ballard
Austin Landis	Max Meinhart
Cole Johnson	Melody Chambers
Elijah Smith	Mia Melendez
Elijah Hamilton	Page Mushaney
Elise Hortin	Reese Doran
Elley Bennett	Ryker Kotmel
Ethan John	Rylan Robb
Faith Folz	Sophie Oliver

WELCOME

to the entering Class of 2025!

As you focus your attention on the days ahead, you will be exposed to an ever-changing spectrum of opportunities and experiences. Those of us who are responsible for Welcome Week are delighted that you are here with us and hope you will use this opportunity to gain new ideas, feel prepared to start classes, and make a lot of new friends.

The general purpose of the Welcome Week program is to familiarize you with the people, programs, facilities, and opportunities on campus. Your participation is crucial! We planned these events for you and we urge you to take full advantage of all the activities by attending them.

Welcome Week will probably leave you with some unanswered questions. Please do not hesitate to ask for help from our team of Orientation Leaders (OLs), faculty, staff, and administrators. Our motto is "We care – let us show you."

The program has been created and planned by us, the orientation team, for you, the entering Class of 2025. We hope Welcome Week gives you the opportunity to explore and enjoy the adventures within college life.

Welcome!





Orientation Leaders | OLs are student leaders at the University of Evansville. Extensive training and hard work have gone into putting this program together. Our goal is to assist you in your transition to UE. Please do not hesitate to ask your OL about anything.

Purple Pods and Purple Huddles | Each of you has been assigned to a small group (Purple Pod) for Welcome Week. Each day, you'll come together with your Purple Pod for a Purple Huddle. Your OL will be there to support and guide you through the week. If you did not meet your OL at registration, be sure to ask any OL for the name of your small group. Food, fun, great friends, and adventures await!

Academic Convocation | On Tuesday, you'll take part in the University of Evansville's official academic welcome—a tradition that marks the beginning of your collegiate journey. During this formal ceremony, you'll hear from University leadership, faculty, and student representatives as you're welcomed into the UE academic community. This is a meaningful moment to reflect on the path ahead and the values that unite us as Purple Aces. If you have any questions, ask an OL or visit the Welcome Week Help Desk in Ridgway University Center.

Academic Departmental Meetings (Mandatory on Tuesday as part of Academic Convocation)

On Tuesday, you will meet with faculty members and academic leaders from your intended area of study as part of the Academic Convocation programming. This is a great time for you to get to know who will teach the various classes for which you have registered and who will serve as your academic mentors during your collegiate career. In your Welcome Week registration packet, there is a listing of the department meetings and where they are located. If you have any questions, ask an OL or contact the Academic Services team located on the first floor of Olmsted Administration Hall.

Math Mastery Exam | If Math 105 is the only math course required for your major, and you believe your skills are higher than College Algebra, you can register to take a test with the Mathematics Department. Students who are awarded proficiency based on their performance on the test do not have to take this course if required by their major. To schedule this in-person test during the first week of classes, please contact the Mathematics Department at math@evansville.edu or 812-488-1234.

Student Life Center | The Division of Student Affairs houses all of the student life programs and services. Please refer to your packet for a listing of these offices and where they are located. Most of the offices are on the second floor of Ridgway University Center. If you need any information regarding student life or Welcome Week, you are welcome to stop by and our team will help you in any way we can. The Student Life Center is open Monday through Friday, 8:00 a.m. - 5:00 p.m.

Parking Permits | You can apply online for a parking permit by registering your vehicle through UE Self-Service and downloading the Rave Guardian app, which is used for emergency notifications to campus. Students who are registered full-time (12 hours or more) will be provided a parking permit at no additional cost. Visit selfservice.evansville.edu to register your vehicle (the parking permits link is under UE Forms -> Student -> Parking Permits). Permits will be distributed during the first week of classes in Ridgway University Center.

Meals | All incoming students who participate in Welcome Week will be provided meal tickets as part of their Welcome Week registration packet. Meal tickets must be used with your UE ID in order to enjoy meals with us during Welcome Week. Meal swipes as part of your meal plan will begin on Sunday evening for dinner. If you are a commuter student and do not have a meal plan on campus, please see one of the OLs and they will provide you additional meal tickets.

SCHEDULE

The following schedule is important. It will keep you on track for all the exciting, fun, and informative activities and programs that will occur between now and the start of classes on August 20, 2025.

**Programs that appear in boxes are highly important.
Attendance at these programs is required.**

Saturday, August 16

- | | |
|-----------------------|--|
| 8:00 a.m. - 3:00 p.m. | Residence halls open for check-in.
Visit residencelife.evansville.edu for move-in information. |
| 8:00 a.m. - 4:30 p.m. | University offices open at various times
Admission (9:00 a.m. - noon)
Student Financial Services (10:00 a.m. - 4:00 p.m.)
Mail Services (11:00 a.m. - 1:00 p.m.)
Dining Services Office (10:00 a.m. - 2:00 p.m.)
Health Center (noon - 2:00 p.m.)
International Support Services (11:00 a.m. - 4:30 p.m.)
Facilities available upon request (8:00 a.m. - 2:00 p.m.)
Public Safety (24/7) |

4:00 - 6:00 p.m.	Welcome Week Registration Ridgway University Center To get things started as a full-time student at UE, you need a few basic necessities and, most importantly, your Orientation Leader! Meet your OL as you begin your adventure at the University of Evansville.
4:30 - 6:30 p.m.	Dinner The Eatery, Ridgway University Center UE ID and Welcome Week meal tickets are required for all meals. Meal plan swipes will begin on Sunday evening at dinner.
6:30 p.m.	Are You Ready For This UE Adventure? Shanklin Theatre, Hyde Hall Get ready for life at UE! Meet your OL and go off on your first UE adventure together! Dr. Rachel Carpenter, <i>Vice President for Student Affairs and Dean of Students</i> ; Dr. Abigail Catania, <i>Director of the Center for Student Engagement</i> ; and Vivian Slaton, <i>Student Government Association President</i>
7:00 p.m.	Purple Huddle - OL Small Group Meeting Various Locations
7:45 p.m.	Let's Get Connected! Fitness Center Gym, Carson Center Get ready to laugh, move, and connect! This high-energy kickoff brings the entire class together for games and activities that spark friendships from day one.
9:30 p.m.	Student Activities Board (SAB) Retro Arcade East Terrace Lawn, Ridgway University Center Join us for a blast from the past—where everything glows and the fun never fades!

Sunday, August 17

9:30 - 11:00 a.m.	Restorative Rest Fitness Center Gym, Carson Center Most of us are tired—and not just physically. This session is an opportunity to reset through simple movement, body work, and practical reflection. Together, we'll explore the difference between rest that restores and rest that just helps us check out. Designed to support both physical and spiritual wellbeing, this experience offers a chance to slow down, pay attention, and learn how to build rhythms of rest that actually make a difference.
-------------------	---

10:30 a.m. - 1:00 p.m.	Pajama Jam Brunch The Eatery, Ridgway University Center Roll out of bed and into the ultimate brunch bash — PJs, pancakes, and good vibes only!
1:00 - 2:15 p.m.	ResLifeConnect Residence Hall Lobbies Join us for a meet and greet with your Residence Life team! This is a great opportunity to get to know the staff who support your residential community and learn the essentials of community living. See how life in your residence hall is more than just housing—it's your home away from home.
	Commuter Student Mixer Commuter Student Lounge, Hale Hall Lounge <i>Sponsored by SAB</i> Come connect with fellow commuter students! This is a great opportunity to build community, learn about resources tailored to your commuter experience, and make the most of your time on campus. Pick up your exclusive commuter shirt, grab some Chartwells swag, and discover how being a commuter doesn't mean missing out—it means making campus your own in a unique way!
2:30 p.m.	The Purple Chronicles - A Comedy Shanklin Theatre, Hyde Hall This comedy (starring our very own OLs) gives you a sneak peek at some unforeseen challenges and opportunities that might come as you enter the college scene. This is followed immediately by a Purple Huddle.
3:15 - 4:00 p.m.	Purple Huddle Various Locations
4:00 - 5:00 p.m.	Fitness Center Classetizer (Cycling) Fitness Center Gym, Carson Center
5:00 - 7:00 p.m.	Dinner The Eatery, Ridgway University Center UE ID and Welcome Week meal tickets are required for all meals. Meal plan swipes will begin on Sunday evening at dinner.
7:30 p.m.	Greek Life 101 Room 170, Schroeder Family School of Business Administration Building (SOBA) Greek Life 101 is your crash course on everything you need to know about joining a fraternity or sorority at UE. Learn about the different councils, what to expect during recruitment, and how to get involved. For more information on how to become a member of Greek Life, please visit our Instagram accounts (@UEGreeks, @UESororityLife, @UEFraternityLife) or visit our Recruitment website at evansville.edu/studentengagement/recruitment.cfm .

9:00 - 11:30 p.m.

ResLife Remix (Dance Party)

Eykamp Hall, Ridgway University Center

Sponsored by the Office of Residence Life.

This is quite simply the BEST DANCE PARTY EVER!

All incoming students are invited!

Monday, August 18

7:00 - 8:15 a.m.

Breakfast | The Eatery, Ridgway University Center

8:00 a.m. - Noon

Purple Purpose: New Student Day of Service

Fitness Center Gym, Carson Center

Buses leave from Walnut Street at Ridgway University Center.

UE has a rich tradition of involvement in our local community. Today, the entering Class of 2025 goes into the community to make an impact on the city of Evansville. Join your peers for this New Student Day of Service that will truly make a difference in the lives of others. **Dress comfortably, bring sunscreen, do not wear open-toed shoes, and please do not bring personal belongings/bags.**

11:30 a.m. - 1:00 p.m.

Purple Pod Lunch

The Eatery, Ridgway University Center

1:00 - 2:00 p.m.

Fitness Center Classetizer (HypeHop - Dance Fitness)

Fitness Center Gym, Carson Center

1:30 - 2:30 p.m.

Building Meaningful Connections for Your Future

Room 170, Schroeder Family School of Business

Administration Building (SOBA)

Welcome to your next big adventure at the University of Evansville! In this fun and engaging session with the Center for Career Development, you'll actively explore how to build meaningful connections and tap into exciting opportunities to shape your professional journey. Come ready to participate, connect, and start building the foundation for internships, jobs, and lifelong networks!

2:45 - 4:00 p.m.

Mind Reading Comedian | Shanklin Theatre, Hyde Hall

Sponsored by SAB

Often known by just his surname, Dittelman combines amazing mind reading with stand-up and improv comedy. He blew audiences away as the first ever mind reader on NBC's *America's Got Talent* where he was a season 7 Top 10 finalist and judges' favorite. He has since appeared on *Ellen*, *Live with Kelly and Ryan*, and *Penn & Teller: Fool Us*. He has also been featured in *Entertainment Weekly*, *Rolling Stone*, and *The National Enquirer*. He has studied improv comedy with The Upright Citizens Brigade, ImprovBoston, and The Second City. In 2018, he made his Broadway debut appearing with *The Illusionists* and currently appears in the hit off-Broadway show *Speakeasy Magick*.

4:00 p.m.

UE Photo | Front Oval

Please wear your Purple UE shirt provided during Welcome Week check-in.

4:30 - 5:30 p.m.

Academic Services

Eykamp Hall, Ridgway University Center

College academics require a different level of readiness. But don't worry, we've got you covered at this session. You'll learn tips and tricks for academic success, faculty expectations, and how to have a great semester even if you feel a little nervous about your class load.

5:30 - 7:00 p.m.

Dinner | The Eatery, Ridgway University Center

5:30 - 8:00 p.m.

Greek Fest | Walnut Street and East Terrace Lawn

Sponsored by UE Greek Life.

Join us for Greek Fest, a high-energy Welcome Week event featuring a DJ, lawn games, sweet treats, and fun challenges hosted by our sororities and fraternities. All students are welcome—come hang out, play games, and meet new people!

8:00 - 10:30 p.m.

Purple Playoffs - Field Games

Legacy Courtyard and Carson Center Lawn

Bring your sense of humor and wear some old clothes! We have some outlandish games planned that will undoubtedly bring lots of surprises and lots of laughs! (Please do not bring backpacks with you.) **Tip:** You might get wet, so please protect your cell phone.

Tuesday, August 19

7:00 - 8:15 a.m.

Breakfast

The Eatery, Ridgway University Center

THESE SESSIONS ARE REQUIRED

Dress code for Academic Convocation: Students are required to dress appropriately to reflect the pomp and circumstance of the program. Students should dress business casual (khaki pants, skirts, dresses, polo shirt, button-down shirts, etc.) Jeans, shorts, and T-shirts are not acceptable.

8:00 a.m.

Prologue | *Neu Chapel*

It's time for some inspiration as your faculty get ready to officially welcome you to your UE college journey.

8:50 a.m.

Academic Convocation

All new students of entering Class of 2025

Meeks Family Fieldhouse, Carson Center

This is a traditional event in which we formally present the entering Class of 2025 to the University faculty.

10:15 - 11:30 a.m.

Academic Department Meetings

Consult your Welcome Week packet for location of meetings.

11:30 a.m. - 1:00 p.m.

Lunch and Ace Showcase

The Eatery, Ridgway University Center

Explore a wide range of campus resources and support services designed to help you thrive at UE—all in one convenient, engaging fair!

11:30 a.m. - 1:00 p.m.

Fitness Center Classetizer (Pickleball)

Fitness Center Gym, Carson Center

1:00 - 1:45 p.m.

Diversity Panel | *Eykamp Hall, Ridgway University Center*

Join us for our Diversity Panel during Welcome Week, a vibrant and engaging event that celebrates the rich tapestry of cultures, backgrounds, and perspectives that make up our campus community. Hear firsthand from a panel of students hailing from a variety of backgrounds as they share their unique experiences and insights. Not only is this a panel, but it is also a platform for learning, asking questions, and engaging in meaningful dialogue.

2:15 p.m.

Purple Perspectives | *Shanklin Theatre, Hyde Hall*

Newfound freedom and friends often lead to some challenging and stressful moments. This session explores the social adjustment to college: dating, parties, grades, values, and money. How will you handle it all? *Be aware this session will discuss topics including depression, suicide, sexual assault, body image, and others. These topics may be triggering for some. University counselors will be present if you need to speak with anyone.*

4:30 p.m.

Purple Huddle | *Various Locations*

5:30 - 7:00 p.m.

Purple Pod Dinner

The Eatery, Ridgway University Center

7:00 - 9:00 p.m.

President Pietruszkiewicz's Ice Cream Social

The May House

Enjoy an ice cream sundae at the home of President and Mrs. Pietruszkiewicz as your Welcome Week experience comes to a close. Buses will depart from Walnut Street in front of Ridgway University Center. *Rain location: Fitness Center Gym, Carson Center*

Wednesday, August 20

Day One

Start the semester with confidence. Be bold. Be brave. It all starts on day one. Remember, your OLs will be here for you.



IMPORTANT!

ALL STUDENTS NEED TO BE AWARE OF THE FOLLOWING INFORMATION AND RESOURCES!

Student Handbook

The Student Handbook can be accessed on the web at evansville.edu/offices/deanstudents/student-handbook.cfm. The Student Handbook contains important information regarding student rights and responsibilities, the academic honor code, and general campus policies. It contains specific information relative to alcohol and drug policies, sexual misconduct, harassment, hazing, and grievance policies.

Students are expected to be familiar with the Student Handbook and its policies; ignorance is not an excuse for violating policies or the Student Code of Conduct.

Title IX and other Sexual Harassment and Misconduct Policy

The University of Evansville is committed to maintaining an environment free of harassment, discrimination, misconduct. Specific policies and procedures for reporting inappropriate behaviors, as well as information relative to what one should do if they believe they have been victim of sexual misconduct, are detailed in the Student Handbook or can be found on the web at evansville.edu/offices/titleix/policy.cfm. The Associate Director of Institutional Equity and Title IX Coordinator (Annie Sills) and the Deputy Institutional Equity and Title IX Coordinator (Sarah Kanet) oversee all reports of sexual misconduct. You can reach them at titleix@evansville.edu or 812-488-5261.

Alcohol and Drug Use Policies (including the Responsible Good Neighbor Policy)

Policies related to alcohol and drug use can be found in the Student Handbook in addition to the Alcohol Policy at evansville.edu/alcoholpolicy. Information about state laws can be found on the Attorney General's website at in.gov/attorneygeneral and in.gov/atc/iseep/alcohol-enforcement/rules-and-laws. The Responsible Good Neighbor Policy underscores the importance of students seeking medical assistance in emergency situations and how the University will consider this decision in light of the Student Code of Conduct. **NEVER hesitate to seek medical assistance – it could be the difference between life and death.**

Ace Alerts and Rave Guardian

The Ace Alerts and Rave Guardian systems are the best ways to quickly communicate a campus emergency to the campus community. Information regarding **Ace Alerts and Rave Guardian** can be found on the Office of Public Safety's website at evansville.edu/safety/emergencysystem.cfm. You will need to download the Rave Guardian app in order to receive any campus parking permits.

Public Safety on Campus

The Office of Public Safety emergency phone line is 812-488-6911; the non-emergency phone line is 812-488-2051. The Public Safety website, evansville.edu/safety and the Residence Life website, evansville.edu/residencelife, contain important information relative to security procedures and emergency protocols. All members of the campus community are encouraged to familiarize themselves with these procedures, regardless if they live on campus or commute. The Public Safety website also contains

statistics for campus crime and the Clery Report, as well as instructions for reporting suspicious behavior on campus.

Mental Health Counselors on Call

Emergency counseling services for urgent or life-threatening situations are available after business hours by calling the Office of Public Safety at 812-488-2051 and requesting to speak to the counselor on call.

University Email

The University recommends all students check their University email account at least once per day, as this is the primary form of communication by the University. For assistance with your account, contact the Office of Technology Services (OTS) at ots.evansville.edu, help@evansville.edu, or 812-488-2077.

Personal and Emergency Contact Information

It is important that students provide and update their personal and emergency contact information on file with the University. This information is stored and accessible in UE Self-Service (selfservice.evansville.edu).

Campus Community Info and Events

Visit the UE website's Campus Community tab to find information like the Calendar of Events, the Academic Calendar (including dates the campus is closed), and news headlines. You can also access campus resources including employment opportunities, University Library services, the UE Bookstore, and athletic information. There are links under the MyUEPortal, myue.evansville.edu, to access Self-Service and Blackboard.

Student Organization and Events on UEngage

UEngage is the University of Evansville's central platform for student involvement. Visit uengage.evansville.edu to explore over 100 student organizations, discover upcoming campus events, and track your co-curricular involvement. Whether you're looking to join a club, attend a social or academic event, or even start your own organization, UEngage makes it easy to connect with the vibrant UE community and make the most of your college experience!

Disability Services

The University of Evansville is committed to creating an accessible and inclusive environment for all students. The Office of Disability Services works with students who have documented disabilities to coordinate reasonable accommodations and support services. Whether you need classroom adjustments, housing accommodations, or other support, the office provides individualized assistance to help you succeed. To begin the process, students should submit documentation and schedule a meeting with a provider. Learn more at evansville.edu/counseling/disability or contact the office at 812-488-2663 or disabilityservices@evansville.edu.

Need Help?

No matter your need – financial, academic, personal – there is a UE resource to help you. Bookmark evansville.edu/NeedHelp for the next time you are struggling. Reach out to any of your faculty, staff, administrators, peers, resident assistants, OLs, or walk into any office and ask how you might be supported on campus or who could help you resolve a question you have. We are here for you.

TOP 10 WAYS TO SUCCEED YOUR FIRST YEAR

- 1. Go to every class! Keep a calendar/planner with exam dates, deadlines for papers, etc. Make sure you use your UE academic planner that you'll get at the end of Welcome Week.
- 2. Get involved – find something you love to do!
- 3. Have fun and stay fit at the Student Fitness Center or sign up to compete in Intramurals (IMs).
- 4. Meet new people and keep an open mind.
- 5. Visit your professors during open office hours or over lunch/coffee.
- 6. Join (or start a new) student organization.
- 7. Serve on your Residence Hall Council. Get to know your Resident Assistants (RAs) and your Residential Coordinator (RC).
- 8. Utilize campus resources like the Writing Center, peer tutoring, the Library, tutoring, Academic advising, and Career Development. We're all here for you!
- 9. Start new traditions for yourself and your new friends.
- 10. Find a favorite study spot on campus like the Library or in another building where you can focus.

WHAT'S GOING ON AROUND CAMPUS?

- 1. Read your UE email daily – check out PurplePulse, an email that goes out on Monday, Wednesday, and Friday with updates from the University.
- 2. Visit evansville.edu to find the academic calendar and calendar of campus events under the "campus community" tab.
- 3. Visit uengage.evansville.edu to explore all active student organizations on campus and their events.
- 4. Follow the UE Student Engagement Instagram account @UEStudentEngagement.
- 5. Attend Student Government Association (SGA) meeting! SGA meets on Thursdays at 5:00 p.m. in Room 170, Smythe Lecture Hall, Schroeder School of Business Administration Building (SOBA).
- 6. Check out the bulletin boards and digital screens in your residence hall or around campus for flyers and marketing approved by the Center for Student Engagement (CSE).
- 7. Have an idea of something you would like to see on campus or do locally? Contact the Center for Student Engagement (cse@evansville.edu) or visit the Student Life Center on the second floor of Ridgway University Center).

SAVE THIS



IMPORTANT DATES

FALL 2025

Classes begin	Wednesday	August 20
Last day to register/add courses	Tuesday	August 26
Last day to drop w/o a "W"*	Tuesday	August 26
Labor Day - no classes	Monday	September 1
<i>University offices are closed; Public Safety and Residence Life on-call staff are available for emergencies.</i>		
Fall Break begins	Saturday	October 11
Classes resume	Wednesday	October 15
Last day to withdraw with a "W"*	Friday	November 7
Thanksgiving Break begins	Wednesday	November 26
<i>University offices are closed; Public Safety and Residence Life on-call staff are available for emergencies.</i>		
Classes resume	Monday	December 1
Reading/Study Day	Thursday	December 4
Final exams begin	Friday	December 5
Final exams end	Thursday	December 12
<i>Residential students are expected to leave for Winter Break 24-hours after their last final. Check with your RA for more info. Halls will close for Winter Break.</i>		

SPRING 2026

Classes begin	Monday	January 12
Last day to register/add courses	Friday	January 16
*Last day to drop w/o a "W"	Friday	January 16
Martin Luther King Jr. Day	Monday	January 19
<i>No classes are held. Activities on campus are highly encouraged.</i>		
Spring Break begins	Saturday	March 7
Classes resume	Monday	March 16
*Last day to withdraw with a "W"	Friday	April 10
Easter Break begins	Thursday	April 2
<i>University offices are closed on Good Friday, April 3.</i>		
Classes resume	Monday	April 6
Reading/Study Day	Thursday	April 30
Final exams begin	Friday	May 1
Final exams end	Thursday	May 7
<i>Residential students are expected to move-out and check out 24 hours after their last final. Check with your RA for more info.</i>		



Scan the QR code to access UE calendars, catalogs, and schedules online. Bookmark this page for later on your device!

"W" means to withdraw from a class with a W on your transcript. If you are considering withdrawing from any of your courses, please contact the Office of Academic Services to inform and guide you through this process. academicservices@evansville.edu

IMPORTANT NUMBERS

Public Safety (emergency line): 812-488-6911

Public Safety (non-emergency line): 812-488-2051

The **Student Life Center** is located on the second floor of Ridgway University Center and includes the following offices. Visit our website at evansville.edu/offices/deanstudents.

Center for Career Development	812-488-1083 career@evansville.edu
Center for Student Engagement	812-488-2371 cse@evansville.edu
Counseling Services	812-488-2663 counselingservices@evansville.edu
Disability Services	812-488-2663 disabilityservices@evansville.edu
International Support Services	812-488-5607 internationalstudent@evansville.edu
Ombudsperson (student advocate)	812-488-2371 sgadirectorofcommunity@evansville.edu
Residence Life	812-488-2956 residencelife@evansville.edu
Student Government	812-488-2371 sga@evansville.edu
Vice President for Student Affairs and Dean of Students	812-488-2500 deanofstudents@evansville.edu

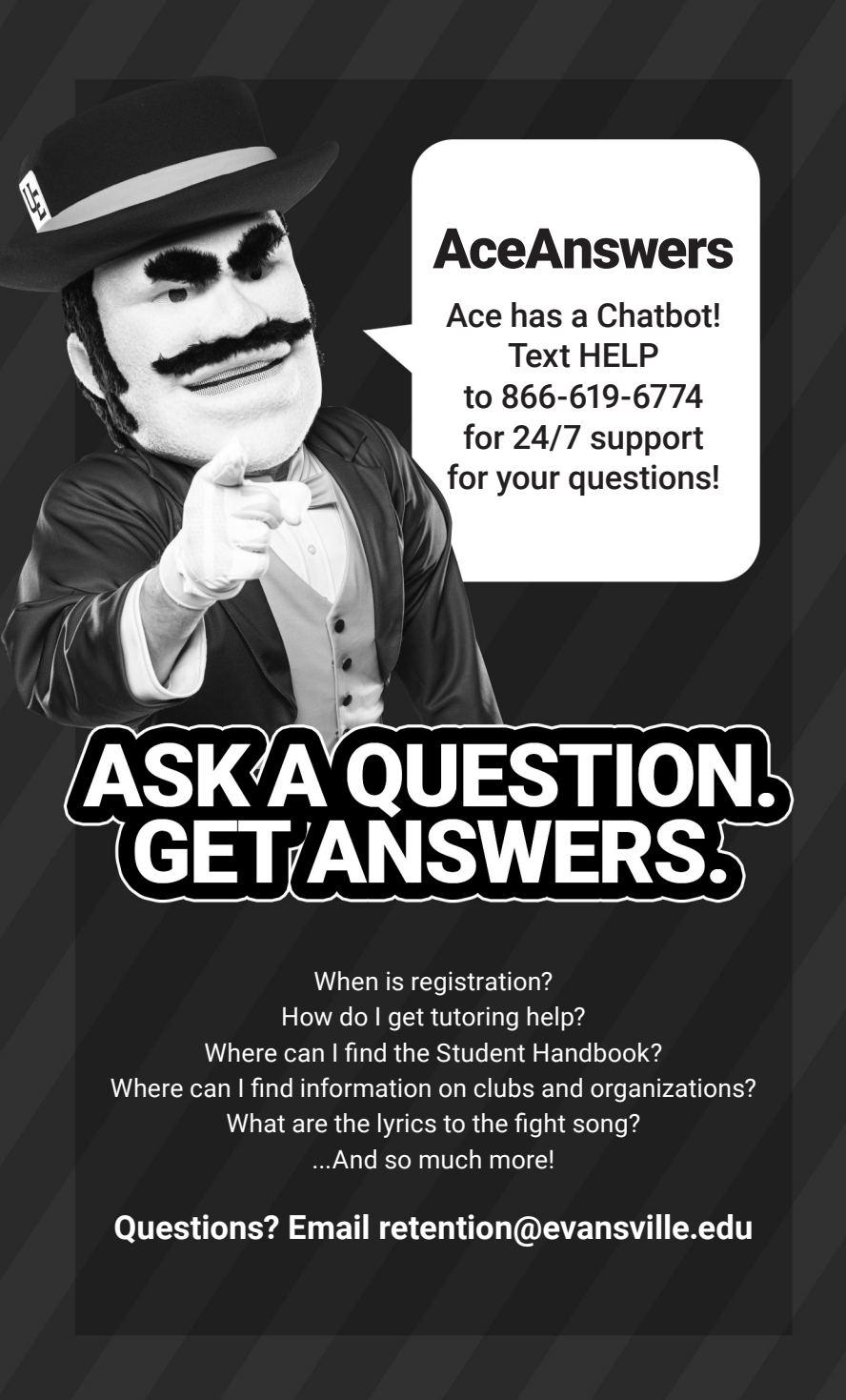
Other Student Affairs Offices

Health Center (Sampson Hall)	812-488-2033 healthcenter@evansville.edu
Public Safety (Administration Building)	812-488-6911 (<i>for emergency calls</i>) 812-488-2051 (<i>for non-emergency calls</i>) publicsafety@evansville.edu
Student Fitness Center	812-488-2622 jc56@evansville.edu or ah519@evansville.edu

Other Important Numbers

Academic Affairs	812-488-1178
Center for Academic Advising	812-488-2600
Center for Inclusive Excellence	812-488-5260
Office of Technology Services Help Desk	812-488-2077
Title IX Coordinator	812-488-2943
Veterans Affairs	812-488-5260
Writing Center	812-488-5212

SAVE THIS



AceAnswers

Ace has a Chatbot!
Text HELP
to 866-619-6774
for 24/7 support
for your questions!

**ASK A QUESTION.
GET ANSWERS.**

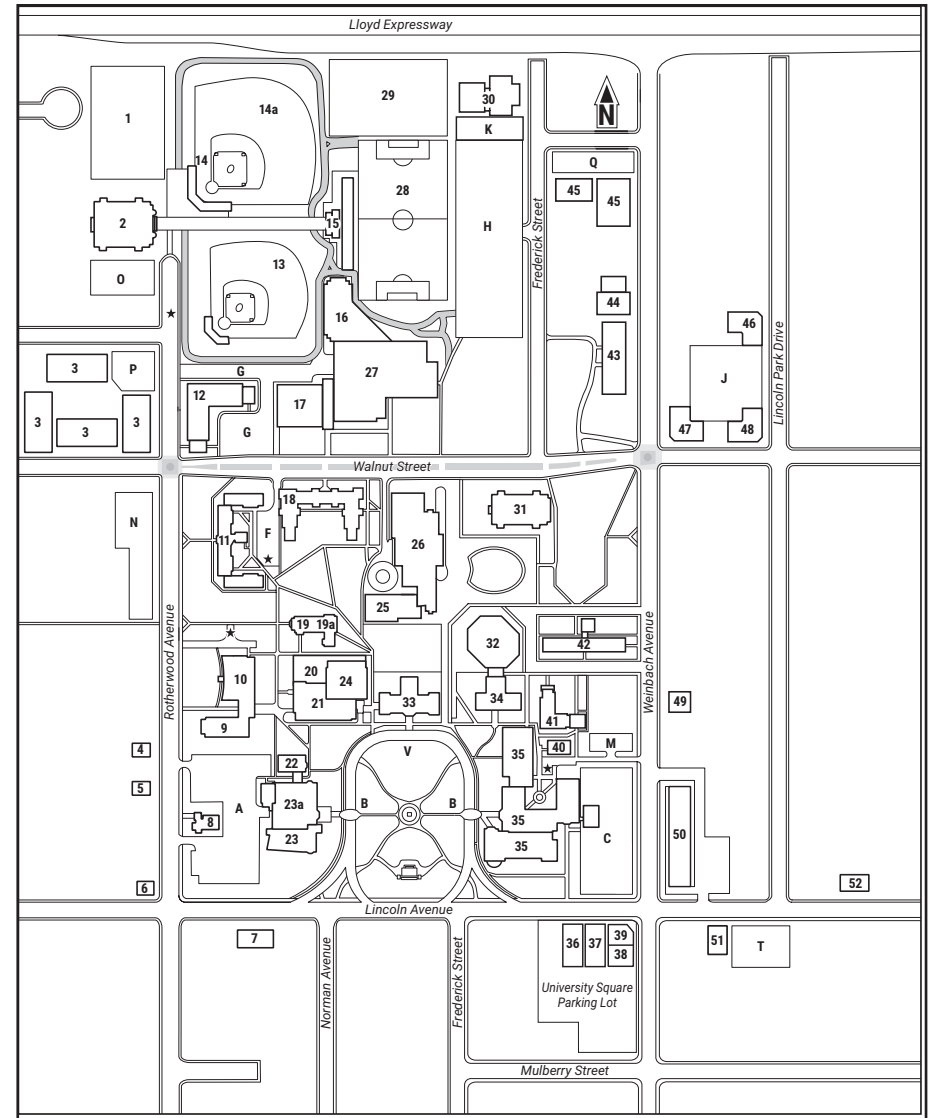
When is registration?
How do I get tutoring help?
Where can I find the Student Handbook?
Where can I find information on clubs and organizations?
What are the lyrics to the fight song?
...And so much more!

Questions? Email retention@evansville.edu

CAMPUS MAP

Alumni and Parent Relations.....	5
Art Annex.....	37
Auxiliary Support Facility.....	2
Black Beauty Field (Soccer)	28
Bower-Suhrheinrich Library.....	32
Center for the Advancement of Learning...	34
Charles H. Braun Stadium (Baseball).....	14
German American Field.....	14a
Carson Center	27
Central Plant.....	25
Clifford Memorial Library	34
James N. and Dorothy M. Cooper Stadium (Softball).....	13
Diversity House	49
Engineering Annex	38
Fehn House	4
Fifth Third Bank Basketball Practice Facility.....	17
Frederick Commons.....	45
General Services Building.....	30
Graves Hal	31
Hale Residence Hall	42
Hyde Hall	21
John L. and Belle Igleheart Building.....	8
Intramural Field	1
Intramural/Practice Field	29
Jones Hall	43
Koch Center for Engineering and Science.....	35

Krannert Hall of Art and Music.....	9
Lambda Chi Alpha Fraternity.....	44
Lincoln Commons and Qdoba/ Orange Leaf.....	50
May Studio Theatre	20
Arad McCutchan Stadium	15
Melvin Peterson Gallery	39
UE Mental Health and Wellness Clinic and Emily M. Young Assessment Center.....	36
Moore Residence Hal	11
Neu Chapel.....	19
Wesley Gallery.....	19a
New Residence Hall	18
Olmsted Administration Hall	33
Panhellenic Center	52
Peters-Margedant House	40
Phi Gamma Delta (FIJI) Fraternity	46
Phi Kappa Tau Fraternity	48
Mary Kuehn Powell Residence Hall.....	41
Ridgway University Center	26
Sampson Hall (Crayton E. and Ellen Mann Health Center)	22
Schroeder Family School of Business Administration Building.....	23
McCurdy Wing.....	23a
Schroeder Residence Hall	12
Esports Center	12
Shanklin Theatre	24
Sigma Alpha Epsilon Fraternity.....	7



Sigma Phi Epsilon Fraternity	47
Student Fitness Center.....	16
Tau Kappa Epsilon Fraternity	51
Vize House	6
Walnut Commons.....	3
Wheeler Concert Hall	10

Employee and Student Parking	A-T
Visitor Parking	V
Motorcycle Parking	★



CHANGING LIVES.
CHANGING THE WORLD.